



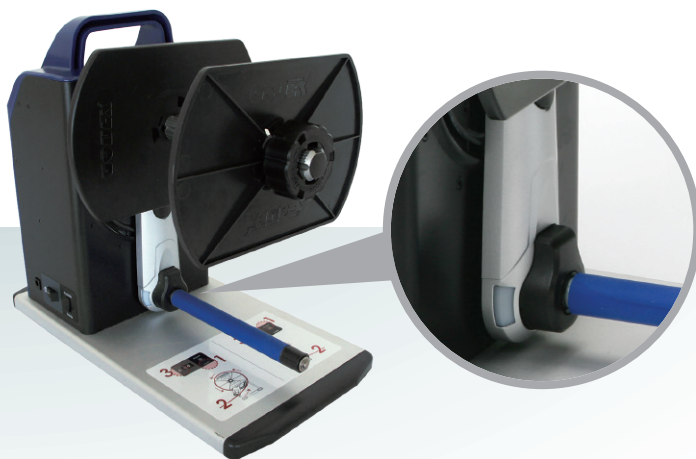
Label Rewinder Family

# T10C / T20C / T30C

## Re-/ Unwinder for Colour Printers



VR(Speed Adjustment)



Colored LED indicator provides rewinder operation status

# T10C / T20C / T30C

## Re-/ Unwinder

Model		T10C	T20C	T30C
<b>Paper Width</b>		4.72" (Max.)	7" (Max.)	8.46"
<b>Rewind Speed</b>		6 IPS (Max.)		
<b>Label Roll</b>		8" (Max.)	6" (Max.)	4" (Max.)
<b>Core Roll</b>		Coreless, 1" (25.2~25.6mm), 1.5"x2 (37.4~38.0mm&40~40.6mm), 3" (76~76.6mm)		
<b>Label Roll Weight</b>		5 Kg		5,5 Kg (12 lb)
<b>Rewinding</b>		Label Inside / Outside		
<b>Switches</b>		Rewind		
<b>Motor</b>		Hybrid Motor		
<b>Power</b>		100-240V AC 24W, 24V Adapter		
<b>Environment</b>	<b>Operation Temperature</b>	5°C bis 40°C (41°F bis 104°F)		
	<b>Storage Temperature</b>	-20°C bis 60° (-4°F bis 122°F)		
<b>Humidity</b>		10-85%, (non-condensing RH)		
<b>Agency Approvals</b>		CE, FCC Class A		
<b>Size (H*W*D)</b>		303mm*180mm*349mm	303mm*180mm*394mm	303 mm*230mm*349 mm
<b>Weight</b>		5 Kg (11lb)		5,5 Kg (12lb)

\* Specifications are subject to change without notice. All company and/or product names are trademarks and/or registered trademarks of their respective owners.