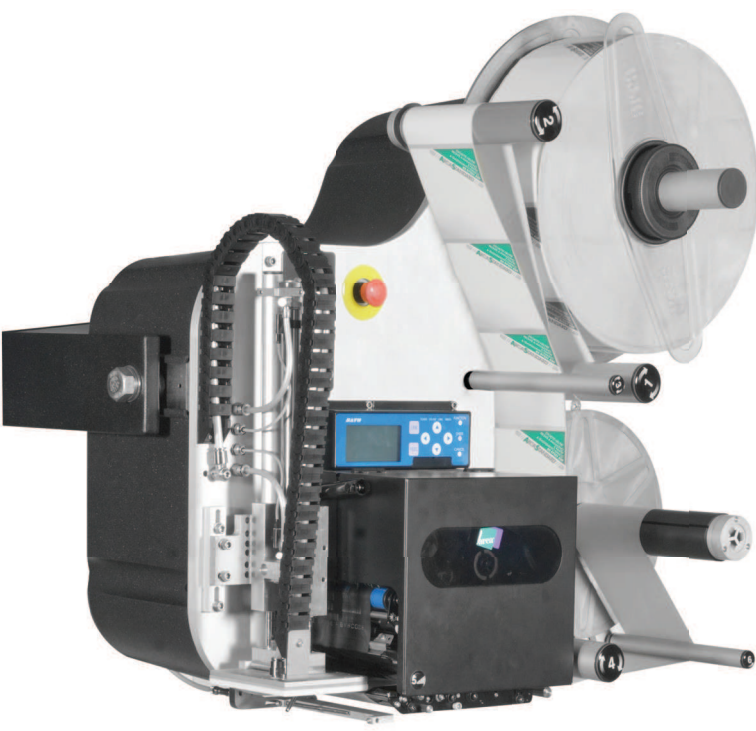




The Linerplus is a state of the art print apply, extraordinarily versatile, complete with all kinds of accessories and able to satisfy every possible application need.

- speed and liner maximum width depending on print module installed
- built on a solid anodized aluminium alloy plate, with all the components protected by the rear 61 Shore hardness light polymer shell. A safe and most robust machine, designed to last over time
- 4 pneumatic solenoid valves with independent blast and suction, to reduce air consumption (suction is suspended when the label is not on the pad)
- emergency push button
- large diameter (360mm / 14.17") reel for long duration
- paper path rollers numbered for quick loading
- expansion rewriter manual
- "U arm" for universal positioning
- configured for the integration of a Sato or Zebra print module
- built in control panel, with luminous LEDs and soft keys. Otherwise, in the Advanced version, an independent control unit which can be located wherever most practical for the operator (cable length: 3 metres / 9.84 feet)



Applicators



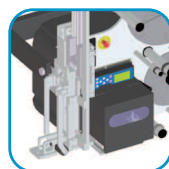
HIGH PRECISION SAFE



HIGH SPEED



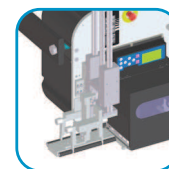
HIGH PRECISION SLIM



L-SEAL



SOFT L-SEAL



U-SEAL

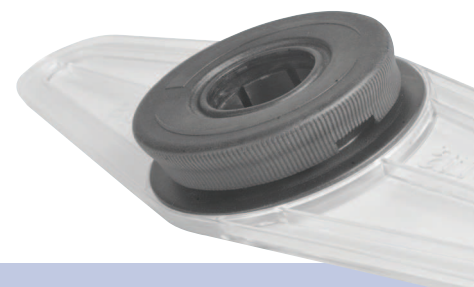


PIVOT



PIVOT-R

The reel securing plaque is transparent, light and takes up little space. Equipped with ergonomic handle, it can be quickly removed with a rotation of only 60°





In the Linerplus with standard electronics, use is very simple, thanks to the concentration of all the adjustments and controls in a single panel including:

- four function buttons: alarm reset, stand by, printing and dispensing of a label and label application (cylinder movement)
- four luminous LEDs to signal machine state: working/stand-by, failure, product detection and printing in process
- two flow regulators, to control the exit and return speed of the pneumatic actuator
- two flow regulators to control the suction and holding force (Air Assist) of the label, at the dispensing stage

Linerplus Advanced

Equipped with 2.5 inch single color graphic display, back lit, complete with 4 “smart keys” and number keyboard. Multi language menu (Italian, English, French, German, Spanish, Portuguese and Russian), divided for three levels of authority between “operator”, “supervisor” and “maintenance staff”

- Quick Set Up for the rapid start
- “recovery of label missing”
- instant display of output
- electronic adjustment of the labeling point on the product. There is no need for manual movement of the sensor
- resettable counter



The barcode reader or vision sensor is connected to the labeler Advanced control unit



- “match to variable speed”
- “multi application”
- “alternate application”
- “product filter”
- possibility of graphic interface via the Inspector control unit
- all the settings can be stored and modified while machine running
- firmware upgradable by remote
- Scanmanager functions for the management of a barcode scanner or of a vision system, with:
 - barcode presence and readability check
 - set data conformance check
 - ejector activation
 - count up of correct/wrong “readings”



FM 22116